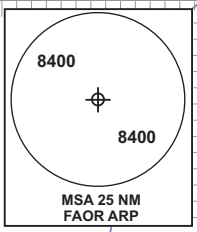
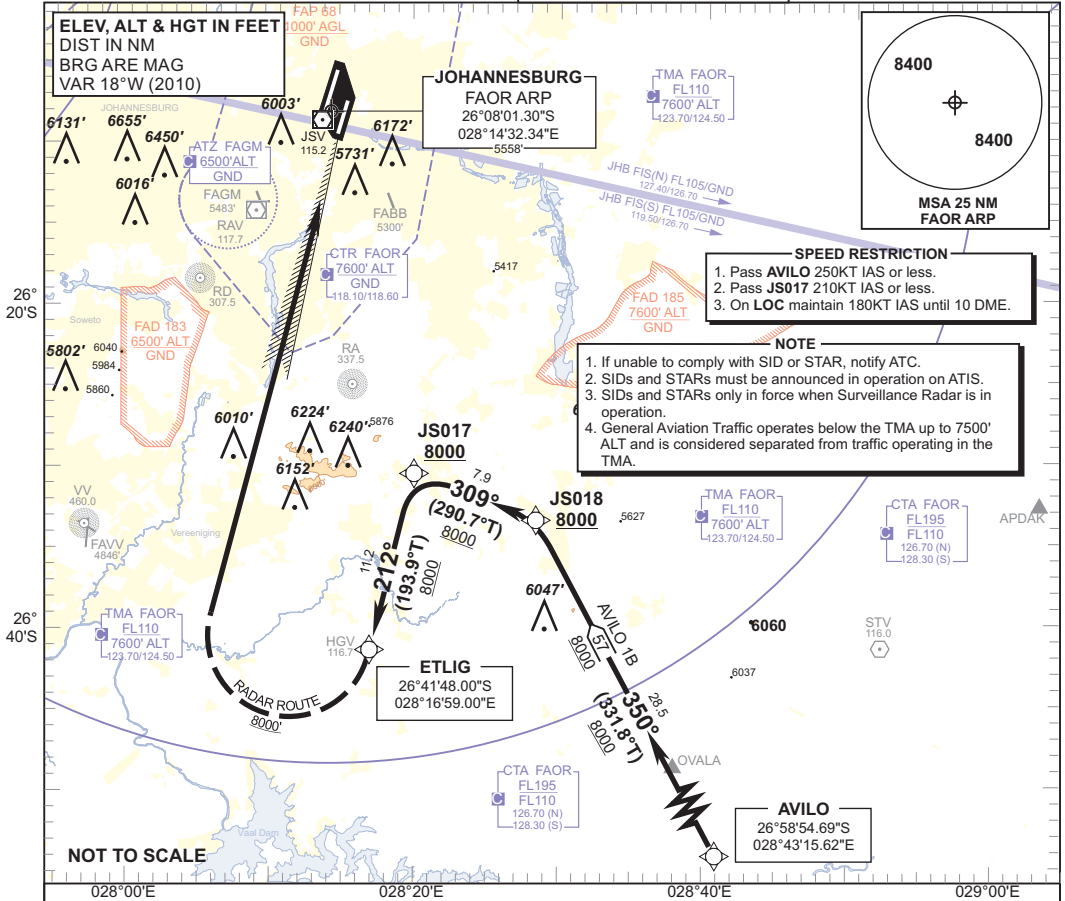


**STANDARD ARRIVAL
CHART -
INSTRUMENT
(STAR)**

TRANSITION ALTITUDE
8000'
TRANSITION LEVEL
ATC

RADAR APP S 124.50 TWR E 118.60
E 124.50 W 118.10
W 123.70 ATIS 126.20
DIR 121.40 115.20
ACC N 126.70 SMC 121.90

JOHANNESBURG
(O.R. TAMBO INTERNATIONAL)
RNAV (GNSS) RWY 03R
AVIOLB



- SPEED RESTRICTION**
1. Pass AVIOLB 250KT IAS or less.
 2. Pass JS017 210KT IAS or less.
 3. On LOC maintain 180KT IAS until 10 DME.
- NOTE**
1. If unable to comply with SID or STAR, notify ATC.
 2. SIDs and STARs must be announced in operation on ATIS.
 3. SIDs and STARs only in force when Surveillance Radar is in operation.
 4. General Aviation Traffic operates below the TMA up to 7500' ALT and is considered separated from traffic operating in the TMA.

NOT TO SCALE

CHANGE: SPEED RESTRICTION BLOCK

AVIOLB RWY 03R Leave AVIOLB for JS018. At JS018 turn left for JS017. At JS017 turn left proceeding to ETLIG for radar vectoring onto the ILS LOC RWY 03.

COMMUNICATION FAILURE PROCEDURE (Squawk 7600)

Before AVIOLB: Proceed to STV and enter STANDERTON RNAV (GNSS) hold descending to FL240, or if lower than FL240, or last assigned level and hold for minimum 5 MIN. Leave STV on the "After STV" Communication Failure Procedure.

After AVIOLB: Continue on the AVIOLB RNAV (GNSS) STAR. At ETLIG continue on the RNAV (GNSS) RWY 03R to JS2F1 and intercept the ILS LOC RWY 03R and land RWY 03R.

Note: Aircraft entering the TMA at FL110 and below are to enter the STV RNAV (GNSS) hold at last assigned level and continue on the routing for the AVAGO 1C STAR.

Caution: Holding patterns below FL110 will be conducted outside of controlled airspace.

In the event of a missed approach with the intention of diverting to an alternate aerodrome, proceed as follows:

- To the North and North-West: Follow the routing for the VASUR 3A SID (to route conventional procedure due to no RNAV SID)
- To the North-East: Follow the routing for the EGMEN 2A SID (Jet ACFT) or EXOBI 1A SID (Turbo-prop ACFT).
- To the South-East: Follow the routing for the APDAK 3A SID.
- To the South and South-East: Follow the routing for the RAGUL 3A SID (to route conventional procedure due to no RNAV SID).